

**Georgia Department of Community Affairs
Office of Research**

COUNTY JAIL INMATE POPULATION REPORT*

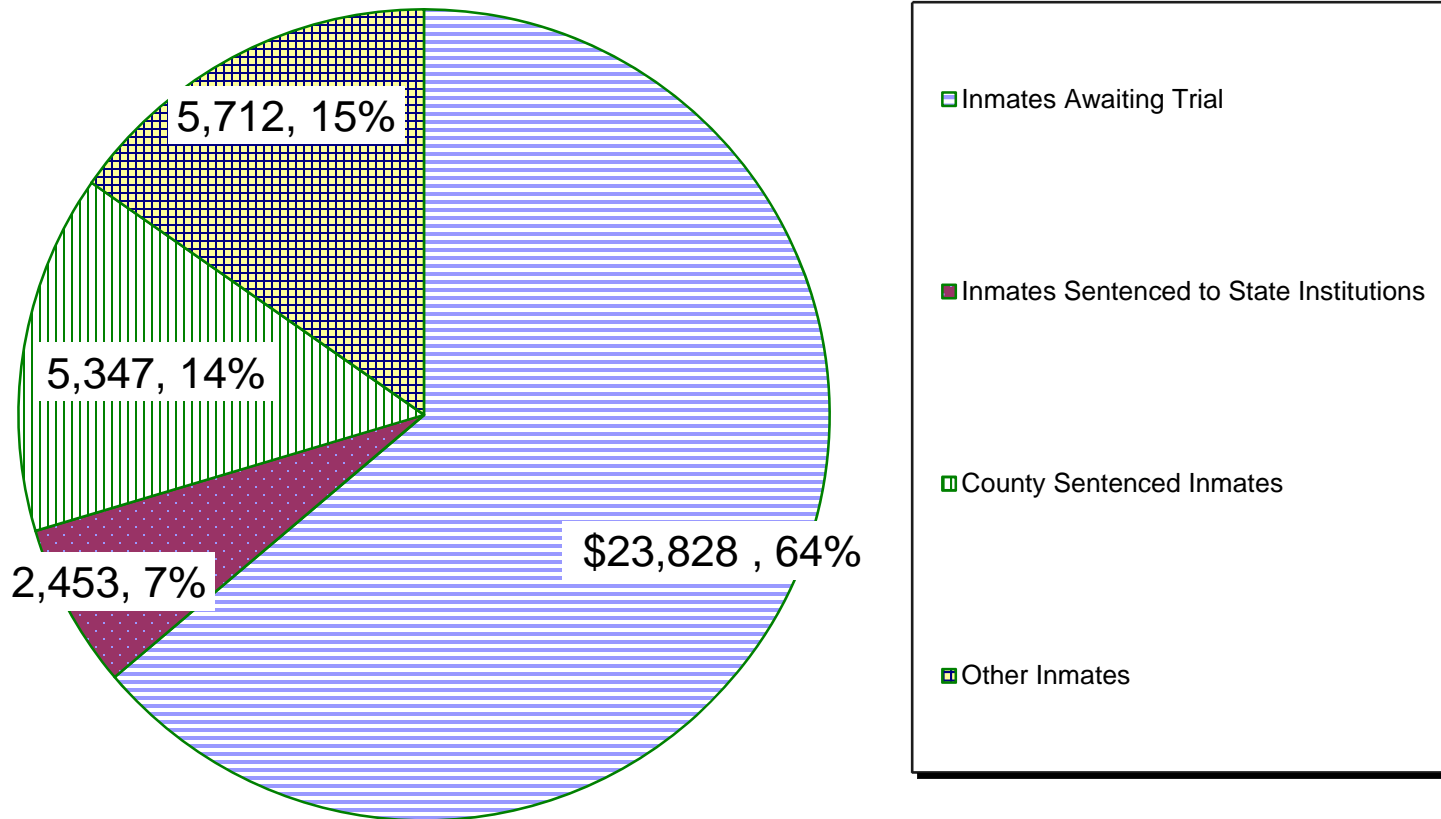
**Inmate Counts Reported To GBI/GCIC By Each Sheriff's Office
For Their Inmate Population AS OF: Thursday, Dec 7, 2017**

DATA SUMMARY

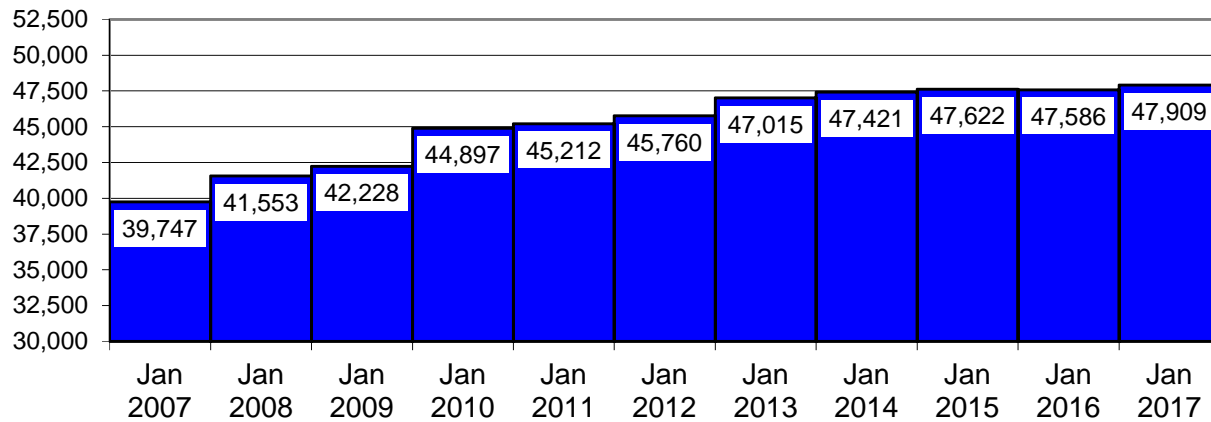
ITEM	DEC 2017		NOV 2017		INCR /DECR	
	#	%	#	%	#	%
1 Number of Jail Inmates	37,340		38,548		-1,208	
2 Capacity of Jails Reporting (permanent beds)	48,073		48,073		0	
3 Percent of Jail Capacity		78%		80%		-2%
4 Number of Jails Over Capacity	22		27		-5	
5 Inmates Sentenced to State Institutions	2,453		4,311		-1,858	
6 Percent of State-Sentenced Inmates Housed at County Level		7%		11%		-4%
7 Number of Inmates Awaiting Trial	23,828		22,728		1,100	
8 Percent of Inmates Awaiting Trial		64%		59%		5%
9 Number of Inmates Sentenced to County Jails	5,347		5,762		-415	
10 Percent of Inmates Sentenced to County Jails		14%		15%		-1%
11 Number of Other Inmates	5,712		5,747		-35	
12 Percent of Other Inmates		15%		15%		0%
13 Percent of Jails Reporting		100%		100%		0%
14 Number of Counties with Jails	143		143		0	

*** In cooperation with the Georgia Crime Information Center, the Georgia Department of Community Affairs compiles and publishes this report for the Georgia Sheriff's Association and the Association County Commissioners of Georgia. All data in this report has been provided to GBI/GCIC by Sheriff's offices and transferred from the Georgia Bureau of Investigation to DCA for publication."

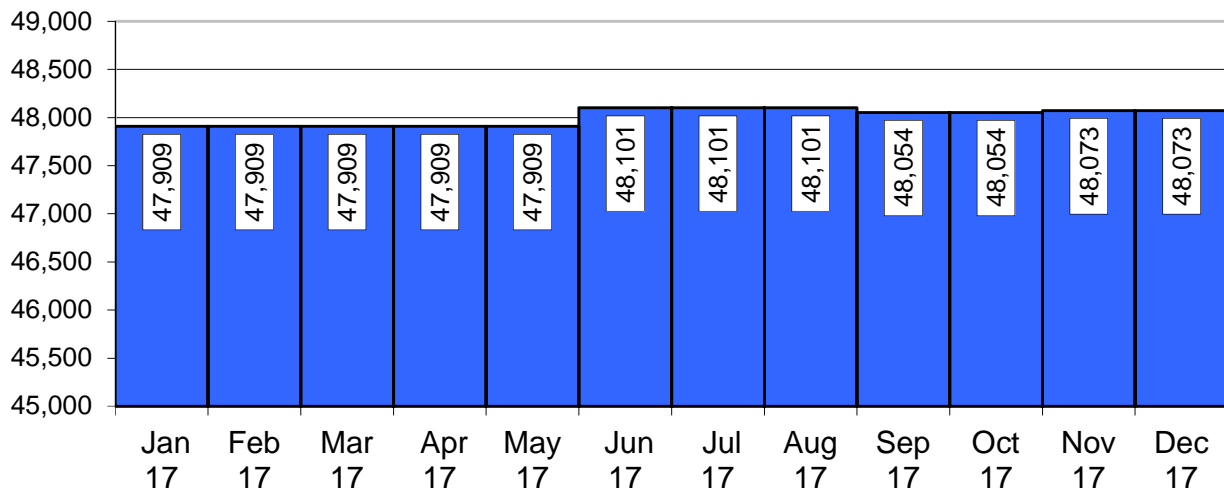
Jail Composition December 2017

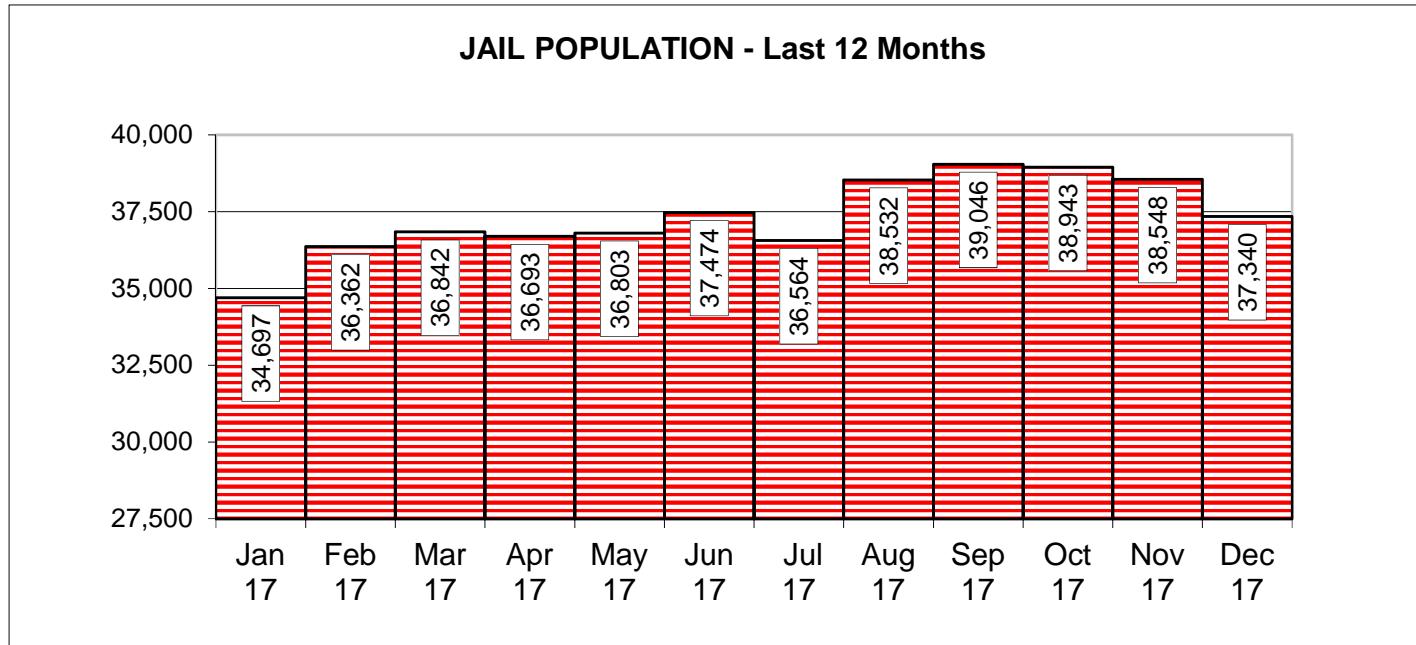
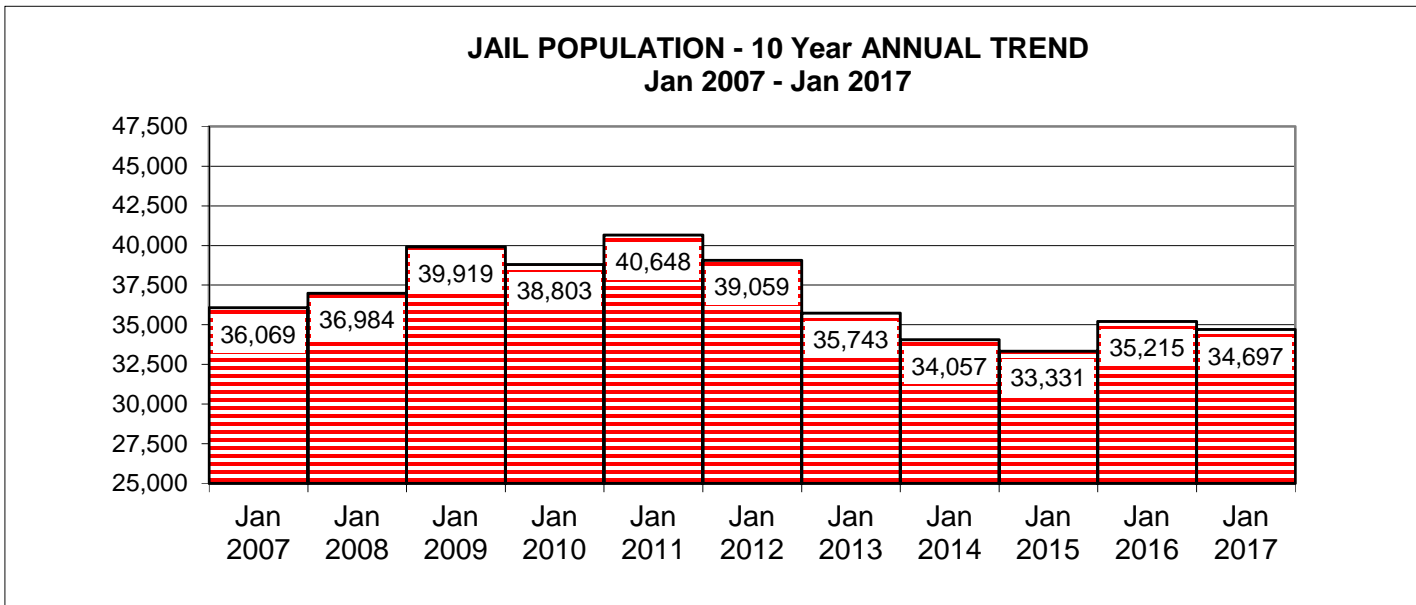


COUNTY JAIL CAPACITY - 10 Year ANNUAL TREND
Jan 2007 to Jan 2017



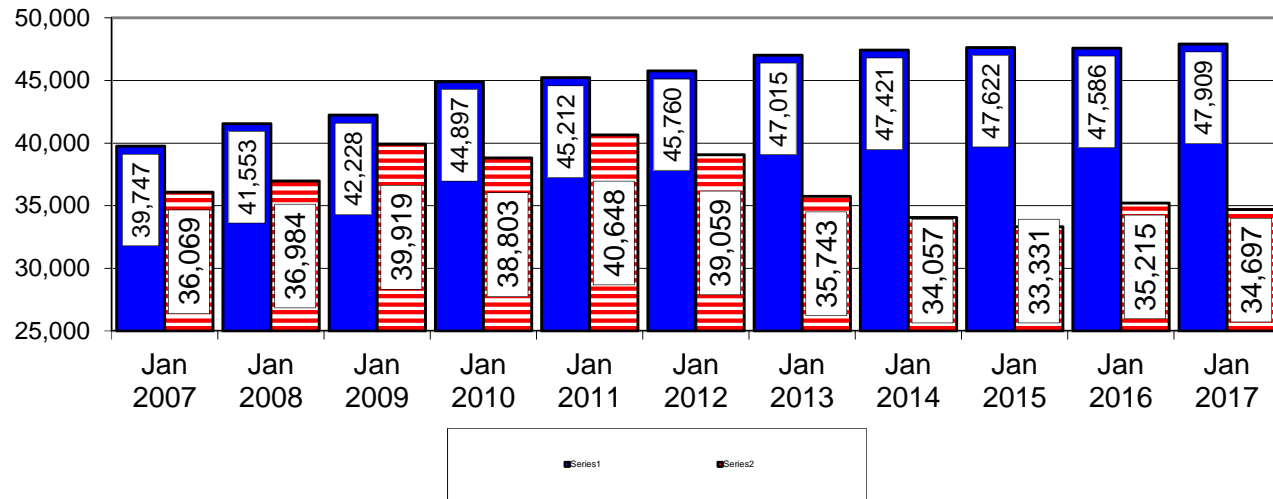
COUNTY JAIL CAPACITY - LAST 12 MONTHS



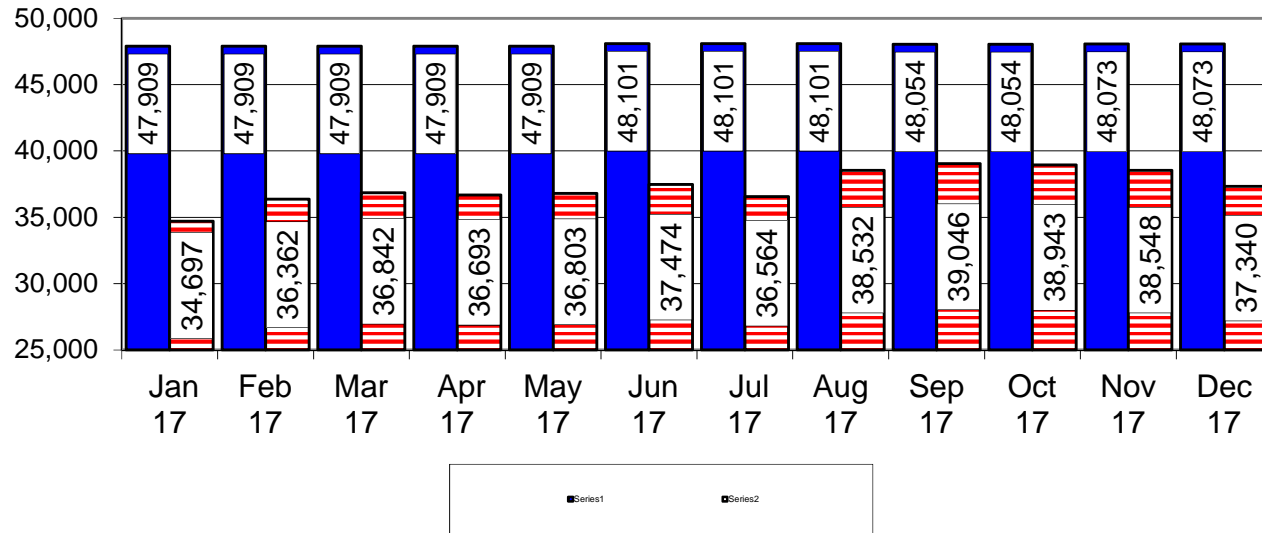


Source: All data in this report has been provided to DCA by the Georgia Bureau of Investigation (GBI).

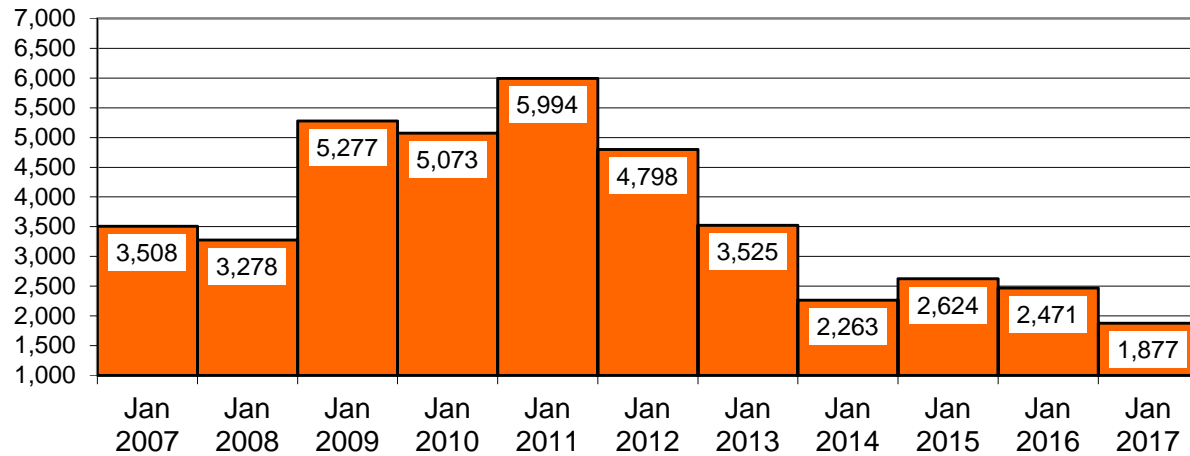
JAIL CAPACITY VS INMATE POPULATION - 10 Year ANNUAL TREND
Jan 2007 - Jan 2017



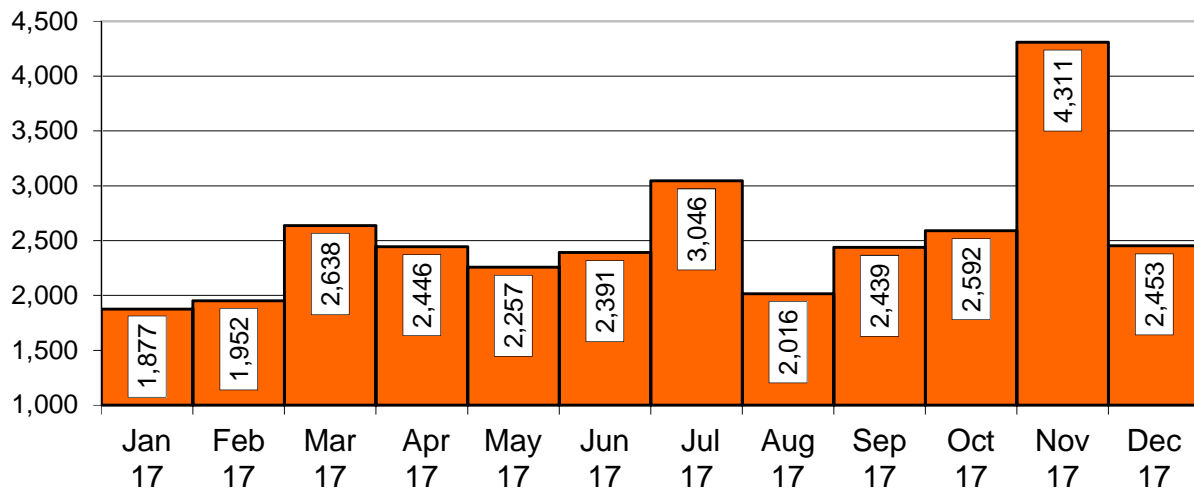
JAIL CAPACITY VS INMATE POPULATION - LAST 12 MONTHS

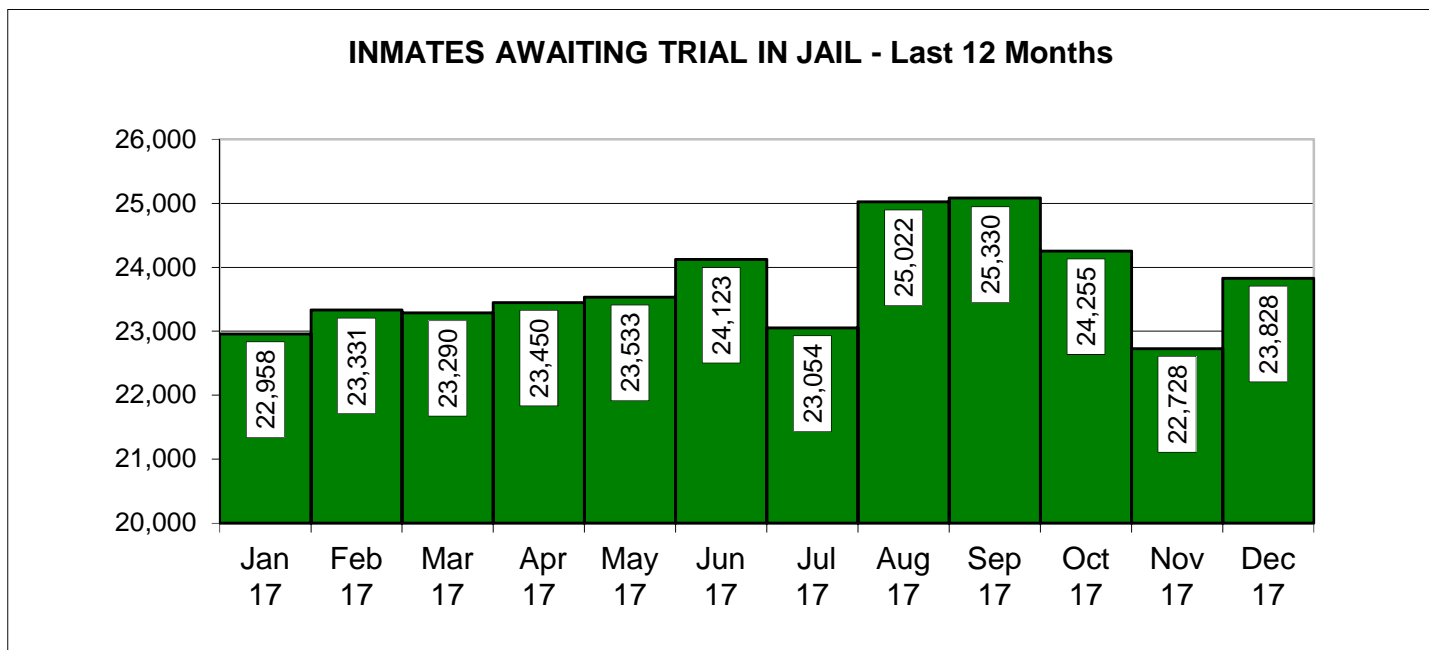
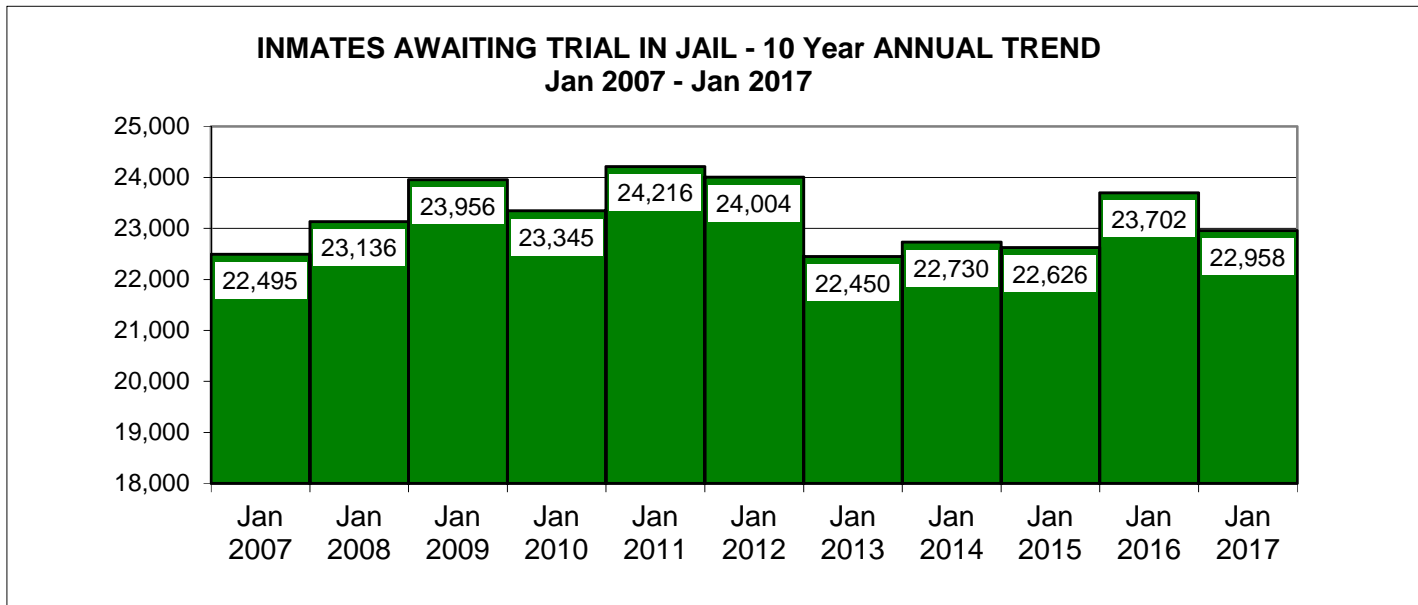


INMATES SENTENCED TO STATE - 10 Year ANNUAL TREND
Jan 2007 - Jan 2017



INMATES SENTENCED TO STATE - Last 12 Months





County Jail Report
Primary Jail Capacity Data
Dec 2017

(Does not include Inmates housed in other detention facilities such as Work Release Centers, County Prisons, etc.)

Jurisdiction	Total Number of Inmates			Inmates as % of Capacity		Number of Inmates Sentenced to State		Number of Inmates Awaiting Trial in Jail		Number of Inmates Serving County Sentence		Number of Other Inmates	
	In Jail	Jail Capacity		Number	% of Total	Number	% of Total	Number	% of Total	Number	% of Total	Number	% of Total
001	APPLING	77	84	92%	14	18%	42	55%	5	6%	16	21%	
002	ATKINSON	15	18	83%	1	7%	14	93%	0	0%	0	0%	
003	BACON	52	76	68%	0	0%	0	0%	38	73%	14	27%	
004	BAKER NO JAIL	0	0	0%	0	0%	0	0%	0	0%	0	0%	
005	BALDWIN	228	316	72%	3	1%	57	25%	52	23%	116	51%	
006	BANKS	54	60	90%	1	2%	48	89%	5	9%	0	0%	
007	BARROW	265	391	68%	18	7%	205	77%	31	12%	11	4%	
008	BARTOW	606	471	129%	50	8%	337	56%	205	34%	14	2%	
009	BEN HILL	98	136	72%	6	6%	79	81%	10	10%	3	3%	
010	BERRIEN	54	74	73%	0	0%	0	0%	39	72%	15	28%	
011	BIBB	808	966	84%	56	7%	352	44%	41	5%	359	44%	
012	BLECKLEY	58	72	81%	16	28%	42	72%	0	0%	0	0%	
013	BRANTLEY	134	124	108%	12	9%	23	17%	48	36%	51	38%	
014	BROOKS	49	112	44%	0	0%	40	82%	8	16%	1	2%	
015	BRYAN	38	68	56%	3	8%	26	68%	4	11%	5	13%	
016	BULLOCH	344	387	89%	57	17%	187	54%	67	19%	33	10%	
017	BURKE	130	138	94%	4	3%	93	72%	3	2%	30	23%	
018	BUTTS	208	316	66%	1	0%	122	59%	15	7%	70	34%	
019	CALHOUN	18	42	43%	1	6%	15	83%	2	11%	0	0%	
020	CAMDEN	127	108	118%	5	4%	112	88%	4	3%	6	5%	
021	CANDLER	25	72	35%	6	24%	14	56%	2	8%	3	12%	
022	CARROLL	510	682	75%	2	0%	492	96%	2	0%	14	3%	
023	CATOOSA	226	248	91%	1	0%	189	84%	8	4%	28	12%	
024	CHARLTON NO JAIL	0	0	0%	0	0%	0	0%	0	0%	0	0%	
025	CHATHAM	1754	1524	115%	51	3%	1568	89%	38	2%	97	6%	
026	CHATTAHOOCHEE NO JAIL	0	0	0%	0	0%	0	0%	0	0%	0	0%	
027	CHATTOOGA	47	46	102%	14	30%	18	38%	0	0%	15	32%	
028	CHEROKEE	569	512	111%	7	1%	467	82%	94	17%	1	0%	
029	CLARKE	437	590	74%	64	15%	311	71%	59	14%	3	1%	
030	CLAY NO JAIL	0	0	0%	0	0%	0	0%	0	0%	0	0%	
031	CLAYTON	1554	1920	81%	68	4%	156	10%	798	51%	532	34%	
032	CLINCH NO JAIL	0	0	0%	0	0%	0	0%	0	0%	0	0%	
033	COBB	2008	1925	104%	251	13%	1406	70%	351	17%	0	0%	
034	COFFEE	322	448	72%	22	7%	168	52%	10	3%	122	38%	
035	COLQUITT	223	210	106%	4	2%	166	74%	46	21%	7	3%	
036	COLUMBIA	297	266	112%	14	5%	241	81%	36	12%	6	2%	
037	COOK	94	108	87%	0	0%	21	22%	33	35%	40	43%	
038	COWETA	368	300	123%	6	2%	228	62%	130	35%	4	1%	
039	CRAWFORD	21	24	88%	3	14%	15	71%	0	0%	3	14%	
040	CRISP	189	170	111%	25	13%	86	46%	6	3%	72	38%	
041	DADE	78	99	79%	7	9%	33	42%	6	8%	32	41%	
042	DAWSON	102	200	51%	3	3%	43	42%	54	53%	2	2%	

County Jail Report
Primary Jail Capacity Data
Dec 2017

(Does not include Inmates housed in other detention facilities such as Work Release Centers, County Prisons, etc.)

Jurisdiction	Total Number of Inmates		Jail Capacity	Inmates as % of Capacity	Number of Inmates Sentenced to State		Number of Inmates Awaiting Trial in Jail		Number of Inmates Serving County Sentence		Number of Other Inmates	
	In Jail	In Jail			Number	% of Total	Number	% of Total	Number	% of Total	Number	% of Total
043	DECATUR	94	175	54%	12	13%	67	71%	8	9%	7	7%
044	DEKALB	1923	3636	53%	103	5%	1481	77%	262	14%	77	4%
045	DODGE	124	162	77%	0	0%	101	81%	1	1%	22	18%
046	DOOLY	49	155	32%	11	22%	33	67%	4	8%	1	2%
047	DOUGHERTY	701	1230	57%	67	10%	489	70%	122	17%	23	3%
048	DOUGLAS	651	1500	43%	39	6%	519	80%	82	13%	11	2%
049	EARLY	30	66	45%	2	7%	22	73%	3	10%	3	10%
050	ECHOLS	NO JAIL	0	0%	0	0%	0	0%	0	0%	0	0%
051	EFFINGHAM	201	130	155%	17	8%	138	69%	46	23%	0	0%
052	ELBERT	80	96	83%	5	6%	44	55%	6	8%	25	31%
053	EMANUEL	86	102	84%	4	5%	61	71%	4	5%	17	20%
054	EVANS	10	26	38%	1	10%	9	90%	0	0%	0	0%
055	FANNIN	66	84	79%	4	6%	62	94%	0	0%	0	0%
056	FAYETTE	278	384	72%	16	6%	219	79%	42	15%	1	0%
057	FLOYD	601	838	72%	53	9%	327	54%	149	25%	72	12%
058	FORSYTH	296	227	130%	52	18%	206	70%	38	13%	0	0%
059	FRANKLIN	87	72	121%	11	13%	58	67%	16	18%	2	2%
060	FULTON	2548	2688	95%	101	4%	1935	76%	132	5%	380	15%
061	GILMER	121	142	85%	1	1%	105	87%	4	3%	11	9%
062	GLASCOCK	NO JAIL	0	0%	0	0%	0	0%	0	0%	0	0%
063	GLYNN	409	610	67%	28	7%	241	59%	11	3%	129	32%
064	GORDON	296	376	79%	28	9%	165	56%	91	31%	12	4%
065	GRADY	64	125	51%	3	5%	46	72%	15	23%	0	0%
066	GREENE	46	125	37%	19	41%	19	41%	3	7%	5	11%
067	GWINNETT	2416	2744	88%	62	3%	1537	64%	67	3%	750	31%
068	HABERSHAM	152	130	117%	9	6%	137	90%	6	4%	0	0%
069	HALL	758	1026	74%	32	4%	363	48%	227	30%	136	18%
070	HANCOCK	19	80	24%	0	0%	17	89%	2	11%	0	0%
071	HARALSON	66	120	55%	9	14%	43	65%	14	21%	0	0%
072	HARRIS	95	100	95%	4	4%	55	58%	7	7%	29	31%
073	HART	49	50	98%	3	6%	42	86%	1	2%	3	6%
074	HEARD	51	60	85%	15	29%	24	47%	5	10%	7	14%
075	HENRY	751	908	83%	30	4%	305	41%	416	55%	0	0%
076	HOUSTON	453	507	89%	34	8%	360	79%	56	12%	3	1%
077	IRWIN	867	1201	72%	2	0%	22	3%	1	0%	842	97%
078	JACKSON	172	452	38%	8	5%	106	62%	18	10%	40	23%
079	JASPER	43	64	67%	1	2%	28	65%	10	23%	4	9%
080	JEFFDAVIS/HAZ	38	64	59%	4	11%	17	45%	11	29%	6	16%
081	JEFFERSON	57	128	45%	6	11%	0	0%	25	44%	26	46%
082	JENKINS	17	24	71%	5	29%	8	47%	0	0%	4	24%
083	JOHNSON	21	42	50%	4	19%	15	71%	0	0%	2	10%
084	JONES	95	125	76%	6	6%	69	73%	6	6%	14	15%

County Jail Report
Primary Jail Capacity Data
Dec 2017

(Does not include Inmates housed in other detention facilities such as Work Release Centers, County Prisons, etc.)

Jurisdiction	Total Number of Inmates In Jail	Jail Capacity	Inmates as % of Capacity	Number of Inmates Sentenced to State		Number of Inmates Awaiting Trial in Jail		Number of Inmates Serving County Sentence		Number of Other Inmates		
				Number	% of Total	Number	% of Total	Number	% of Total	Number	% of Total	
085	LAMAR	70	158	44%	4	6%	24	34%	30	43%	12	17%
086	LANIER NO JAIL	0	0	0%	0	0%	0	0%	0	0%	0	0%
087	LAURENS	211	270	78%	9	4%	187	89%	4	2%	11	5%
088	LEE	87	112	78%	0	0%	86	99%	0	0%	1	1%
089	LIBERTY	175	300	58%	17	10%	138	79%	17	10%	3	2%
090	LINCOLN	49	81	60%	0	0%	23	47%	7	14%	19	39%
091	LONG NO JAIL	0	0	0%	0	0%	0	0%	0	0%	0	0%
092	LOWNDES	683	920	74%	79	12%	482	71%	102	15%	20	3%
093	LUMPKIN	107	150	71%	15	14%	61	57%	10	9%	21	20%
094	MCDUFFIE	86	222	39%	4	5%	65	76%	3	3%	14	16%
095	MCINTOSH	64	114	56%	0	0%	41	64%	3	5%	20	31%
096	MACON	22	68	32%	1	5%	19	86%	2	9%	0	0%
097	MADISON	86	96	90%	5	6%	42	49%	5	6%	34	40%
098	MARION	15	30	50%	1	7%	12	80%	1	7%	1	7%
099	MERIWETHER	92	106	87%	3	3%	55	60%	0	0%	34	37%
100	MILLER	28	70	40%	1	4%	13	46%	12	43%	2	7%
101	MITCHELL	57	116	49%	7	12%	33	58%	16	28%	1	2%
102	MONROE	20	168	12%	3	15%	11	55%	3	15%	3	15%
103	MONTGOMERY NO JAIL	0	0	0%	0	0%	0	0%	0	0%	0	0%
104	MORGAN	71	192	37%	2	3%	34	48%	16	23%	19	27%
105	MURRAY	113	120	94%	18	16%	70	62%	25	22%	0	0%
106	MUSCOGEE	1034	1069	97%	56	5%	828	80%	81	8%	69	7%
107	NEWTON	374	600	62%	54	14%	278	74%	28	7%	14	4%
108	OCONEE	47	136	35%	5	11%	29	62%	12	26%	1	2%
109	OGLETHORPE	41	64	64%	6	15%	26	63%	4	10%	5	12%
110	PAULDING	200	299	67%	7	4%	168	84%	20	10%	5	3%
111	PEACH	98	125	78%	3	3%	94	96%	0	0%	1	1%
112	PICKENS	108	140	77%	2	2%	53	49%	17	16%	36	33%
113	PIERCE	59	72	82%	0	0%	55	93%	3	5%	1	2%
114	PIKE	9	34	26%	0	0%	8	89%	1	11%	0	0%
115	POLK	408	362	113%	18	4%	98	24%	30	7%	262	64%
116	PULASKI	33	42	79%	2	6%	31	94%	0	0%	0	0%
117	PUTNAM	66	120	55%	4	6%	46	70%	14	21%	2	3%
118	QUITMAN NO JAIL	0	0	0%	0	0%	0	0%	0	0%	0	0%
119	RABUN	101	102	99%	2	2%	68	67%	24	24%	7	7%
120	RANDOLPH	38	121	31%	3	8%	29	76%	6	16%	0	0%
121	RICHMOND	976	910	107%	36	4%	793	81%	7	1%	140	14%
122	ROCKDALE	387	692	56%	8	2%	300	78%	54	14%	25	6%
123	SCHLEY	2	12	17%	2	100%	0	0%	0	0%	0	0%
124	SCREVEN	33	247	13%	5	15%	19	58%	5	15%	4	12%
125	SEMINOLE	41	54	76%	5	12%	27	66%	5	12%	4	10%
126	SPALDING	372	547	68%	47	13%	309	83%	16	4%	0	0%

County Jail Report
Primary Jail Capacity Data
Dec 2017

(Does not include Inmates housed in other detention facilities such as Work Release Centers, County Prisons, etc.)

Jurisdiction	Total Number of Inmates In Jail	Jail Capacity	Inmates as % of Capacity	Number of Inmates Sentenced to State		Number of Inmates Awaiting Trial in Jail		Number of Inmates Serving County Sentence		Number of Other Inmates		
				Number	% of Total	Number	% of Total	Number	% of Total	Number	% of Total	
127	STEPHENS	169	192	88%	29	17%	126	75%	8	5%	6	4%
128	STEWART NO JAIL	0	0	0%	0	0%	0	0%	0	0%	0	0%
129	SUMTER	137	262	52%	13	9%	85	62%	4	3%	35	26%
130	TALBOT NO JAIL	0	0	0%	0	0%	0	0%	0	0%	0	0%
131	TALIAFERRO NO JAIL	0	0	0%	0	0%	0	0%	0	0%	0	0%
132	TATTNALL	90	136	66%	9	10%	40	44%	7	8%	34	38%
133	TAYLOR	43	62	69%	2	5%	31	72%	0	0%	10	23%
134	TELFAIR	32	36	89%	0	0%	29	91%	1	3%	2	6%
135	TERRELL	14	55	25%	4	29%	9	64%	0	0%	1	7%
136	THOMAS	188	270	70%	10	5%	158	84%	19	10%	1	1%
137	TIFT	188	260	72%	8	4%	40	21%	90	48%	50	27%
138	TOOMBS	108	128	84%	25	23%	75	69%	5	5%	3	3%
139	TOWNS	51	50	102%	3	6%	40	78%	5	10%	3	6%
140	TREUTLEN	44	42	105%	1	2%	14	32%	3	7%	26	59%
141	TROUP	584	540	108%	81	14%	374	64%	116	20%	13	2%
142	TURNER	46	102	45%	0	0%	0	0%	25	54%	21	46%
143	TWIGGS	26	48	54%	0	0%	0	0%	23	88%	3	12%
144	UNION	88	57	154%	41	47%	35	40%	10	11%	2	2%
145	UPSON	127	213	60%	8	6%	95	75%	15	12%	9	7%
146	WALKER	225	225	100%	30	13%	170	76%	15	7%	10	4%
147	WALTON	347	440	79%	60	17%	233	67%	51	15%	3	1%
148	WARE	391	500	78%	5	1%	225	58%	63	16%	98	25%
149	WARREN NO JAIL	0	0	0%	0	0%	0	0%	0	0%	0	0%
150	WASHINGTON	73	236	31%	5	7%	4	5%	7	10%	57	78%
151	WAYNE	120	170	71%	0	0%	0	0%	56	47%	64	53%
152	WEBSTER NO JAIL	0	0	0%	0	0%	0	0%	0	0%	0	0%
153	WHEELER	6	18	33%	0	0%	6	100%	0	0%	0	0%
154	WHITE	115	176	65%	6	5%	96	83%	7	6%	6	5%
155	WHITFIELD	456	551	83%	57	13%	293	64%	52	11%	54	12%
156	WILCOX	18	16	113%	2	11%	1	6%	11	61%	4	22%
157	WILKES	47	80	59%	7	15%	23	49%	7	15%	10	21%
158	WILKINSON	38	44	86%	4	11%	27	71%	0	0%	7	18%
159	WORTH	38	46	83%	2	5%	33	87%	3	8%	0	0%
	Grand Totals	37,340	48,073	78%	2,453	7%	23,828	64%	5,347	14%	5,712	15%