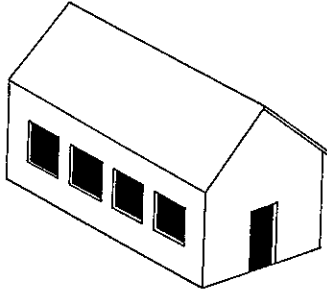


CHURCH TYPES IN GEORGIA

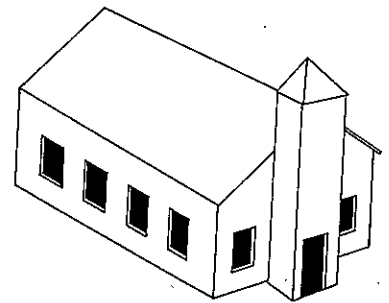
Front Gable



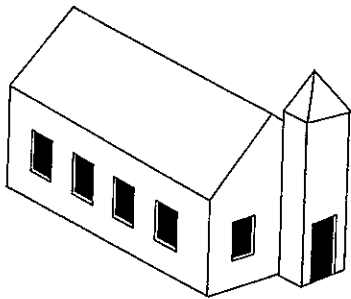
By far the simplest and also the most common type of church in Georgia, the front-gable church is a straightforward box with one or two doors in the front and three to five windows in the sides. They were popular in all periods statewide, especially in rural areas and small communities. Rarely original, rooftop steeples or belfries are common additions.

In this common church type, there is a projecting entrance tower in the center of the front, usually flanked by windows. Built mostly from the 1850s through the 1930s in rural areas and small to medium size towns, the central tower church could just as easily be quite plain or highly ornamental. The tower was typically pyramid-roofed.

Central Tower



Corner Tower



Although not as common as the front-gable or central tower churches, the corner tower church type occurs with some frequency in crossroads communities and small county seats from the 1890s through the 1930s. The projecting corner entrance tower is usually pyramid-roofed and varies in both height and function.

Double tower churches, those with two projecting corner towers, were especially popular in southern parts of Georgia from the 1890s through the 1930s. They were most commonly erected by African-American congregations. The towers could be either the same or different heights, and they typically had pyramidal roofs. Entrance to the church was either from the towers or from the façade between the towers.

Double Tower

